



Customer: Centre Manufacturing LLC  
 Address: 9809 Hamilton Road  
 Eden Prairie, MN 55344  
 Sample ID: Cirtly Splash #3D13  
 Matrix: Edible  
 Labnumber: 23E0089-03

Density (g/mL): 1.0449

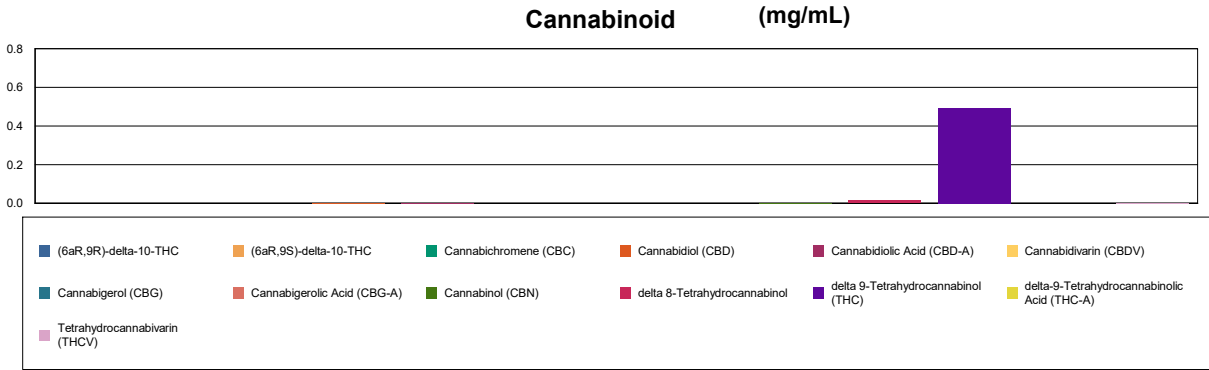
# Cannabinoid Profile

Test Conditions: 21°C  
 Extraction Technician: SH  
 Analytical Chemist: SH

Extraction Date(s)	Analysis Date(s)
5/16/2023	5/17/2023

Cannabinoids (HPLC)	Results		
	LOD (mg/mL)	%	mg/mL
Cannabidivarin (CBDV)	<0.002		
Cannabidiolic Acid (CBD-A)		0.0002	0.00156
Cannabigerolic Acid (CBG-A)	<0.002		
Cannabigerol (CBG)	<0.002		
Cannabidiol (CBD)		0.0004	0.00358
Tetrahydrocannabivarin (THCV)		0.0002	0.0017
Cannabinol (CBN)		0.0003	0.00276
Cannabichromene (CBC)	<0.002		
delta 9-Tetrahydrocannabinol (THC)		0.05	0.493
delta-9-Tetrahydrocannabinolic Acid (THC-A)	<0.004		
delta 8-Tetrahydrocannabinol		0.002	0.016
(6aR,9S)-delta-10-THC	<0.004		
(6aR,9R)-delta-10-THC	<0.004		
<b>Cannabinoids Total</b>		<b>%</b>	<b>mg/mL</b>
Max Active THC (delta-9-tetrahydrocannabinol)		0.05	0.49
Max Active CBD		0.00	<0.002
Total Cannabinoids		0.05	0.52

Following USDA guidelines on uncertainty, Altitude Consulting's uncertainty is calculated to be +/- 5% for all cannabinoids using a coverage factor of 2 (95% confidence interval). Measurement uncertainty has not been factored into reported values. Blank results indicate the compound was below the limit of detection.



Gary Brook - Laboratory Director - 5/17/2023

Reporting Limits will vary based on sample extraction weight used for the analysis. The results of this report are based solely on the sample submitted and cannot be reproduced. Decision Rule: Measurement uncertainty is not accounted for in the reported values. Results are based solely on calculated numbers. Altitude Consulting makes no Statements of conformity. Pesticide, metal, and microbial analyses are subcontracted to ISO 17025 laboratories.