



Customer: Centre Manufacturing LLC
Address: 9809 Hamilton Road
Eden Prairie, MN 55344

Sample ID: CLRTY Blast Pineapple/Jalepeño
Matrix: Edible
Labnumber: 23F0020-04

Total mass or volume per unit (g or mL): 45

Density (g/mL): 1.1262

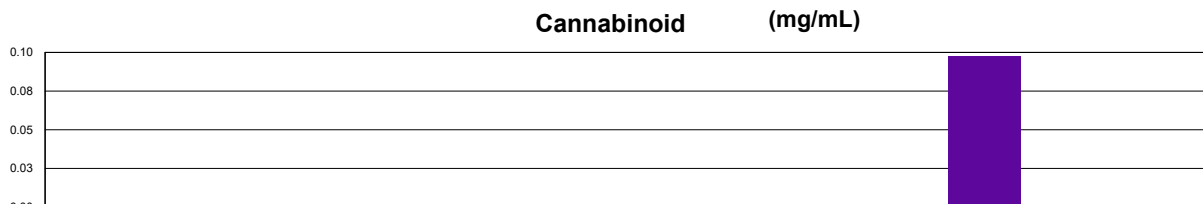
Cannabinoid Profile

Test Conditions: 20°C
Extraction Technician: SH
Analytical Chemist: CB

Extraction Date(s)	Analysis Date(s)
6/6/2023	6/7/2023

Cannabinoids (HPLC)	Results			
	LOD (mg/mL)	%	mg/mL	mg/Bottle
Cannabidivarin (CBDV)	<0.030			
Cannabidiolic Acid (CBD-A)	<0.030			
Cannabigerolic Acid (CBG-A)	<0.030			
Cannabigerol (CBG)	<0.030			
Cannabidiol (CBD)	<0.030			
Tetrahydrocannabivarin (THCV)	<0.030			
Cannabinol (CBN)	<0.030			
Cannabichromene (CBC)	<0.030			
delta 9-Tetrahydrocannabinol (THC)		0.01	0.098	4.39
delta-9-Tetrahydrocannabinolic Acid (THC-A)	<0.060			
delta 8-Tetrahydrocannabinol	<0.060			
(6aR,9S)-delta-10-THC	<0.060			
(6aR,9R)-delta-10-THC	<0.060			
Cannabinoids Total		%	mg/mL	
Max Active THC (delta-9-tetrahydrocannabinol)		0.01	0.10	
Max Active CBD		<0.003	<0.030	
Total Cannabinoids		0.01	0.10	

Following USDA guidelines on uncertainty, Altitude Consulting's uncertainty is calculated to be +/- 5% for all cannabinoids using a coverage factor of 2 (95% confidence interval). Measurement uncertainty has not been factored into reported values.
Blank results indicate the compound was below the limit of detection.



(6aR,9R)-delta-10-THC	(6aR,9S)-delta-10-THC	Cannabichromene (CBC)	Cannabidiol (CBD)	Cannabidiolic Acid (CBD-A)	Cannabidivarin (CBDV)
Cannabigerol (CBG)	Cannabigerolic Acid (CBG-A)	Cannabinol (CBN)	delta 8-Tetrahydrocannabinol	delta 9-Tetrahydrocannabinol (THC)	delta 9-Tetrahydrocannabinolic Acid (THC-A)
Tetrahydrocannabivarin (THCV)					

Gary Brook - Laboratory Director - 6/7/2023

Reporting Limits will vary based on sample extraction weight used for the analysis.

The results of this report are based solely on the sample submitted and cannot be reproduced. Decision Rule: Measurement uncertainty is not accounted for in the reported values. Results are based solely on calculated numbers. Altitude Consulting makes no Statements of conformity. **Pesticide, metal, and microbial analyses are subcontracted to ISO 17025 laboratories.**