



**Customer:** Centre Manufacturing LLC

**Address:** 9809 Hamilton Road  
Eden Prairie, MN 55344

**Sample ID:** CLRTY Splash 10mg THC Lot 3L24

**Matrix:** Edible

**Labnumber:** 24C0075-02 Total mass or volume per unit (g or mL): 10

**Density (g/mL):** 1.1036

## Cannabinoid Profile

**Test Conditions:** 17°C

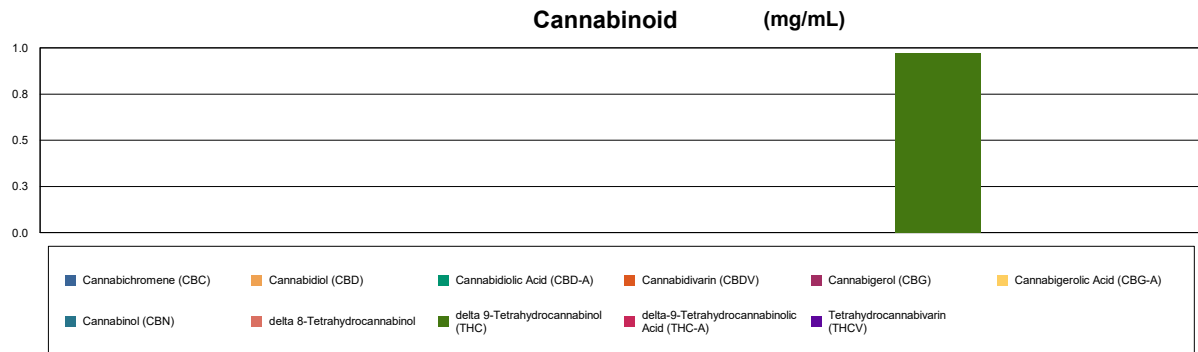
**Extraction Technician:** CQ

**Analytical Chemist:** CB

Extraction Date(s)	Analysis Date(s)
3/14/2024	3/14/2024

Test Method: Cannabinoid Potency by HPLC		Results		
	LOD (mg/mL)	%	mg/mL	mg/Bottle
Cannabidivarin (CBDV)	<0.070			
Cannabidiolic Acid (CBD-A)	<0.070			
Cannabigerolic Acid (CBG-A)	<0.070			
Cannabigerol (CBG)	<0.070			
Cannabidiol (CBD)	<0.070			
Tetrahydrocannabivarin (THCV)	<0.070			
Cannabinol (CBN)	<0.070			
Cannabichromene (CBC)	<0.070			
delta 9-Tetrahydrocannabinol (THC)		0.10	0.974	9.74
delta-9-Tetrahydrocannabinolic Acid (THC-A)	<1.40			
delta 8-Tetrahydrocannabinol	<0.10			
<b>Cannabinoids Total</b>		<b>%</b>	<b>mg/mL</b>	
Max Active THC (delta-9-tetrahydrocannabinol)		0.10	0.97	
Max Active CBD		<0.007	<0.070	
Total Cannabinoids		0.10	0.97	

Following USDA guidelines on uncertainty, Altitude Consulting's uncertainty is calculated to be +/- 5% for all cannabinoids using a coverage factor of 2 (95% confidence interval). Measurement uncertainty has not been factored into reported values. Blank results indicate the compound was below the limit of detection.



END OF REPORT

END OF REPORT

**Gary Brook - Laboratory Director - 3/15/2024**

Reporting Limits will vary based on sample extraction weight used for the analysis.

The results of this report are based solely on the sample submitted and cannot be reproduced. Decision Rule: Measurement uncertainty is not accounted for in the reported values.

Results are based solely on calculated numbers. Altitude Consulting makes no Statements of conformity. Pesticide, metal, and microbial analyses are subcontracted to ISO

17025 laboratories.